



### Model E111 11.25° Elbow

cULus Listed, FM Approved  
300 psi (20.7 bar)

#### E111 11.25° Elbow Technical Data

**Operating Specifications**  
**Maximum Working Pressure:**  
 300 psi (20.7 bar)

**Material Specifications**  
**Body:** ASTM A536 Grade 65-45-12 Ductile Iron

**Design Specification**  
**Groove:** AWWA-C606

**Available Finishes**  
**Housing:**  
 Red powder coating  
 Hot dipped galvanized (ASTM A-153)

**Listings and Approvals**  
 cULus Listed  
 FM Approved



#### E111 11.25° Elbow Dimensions

Figure 1

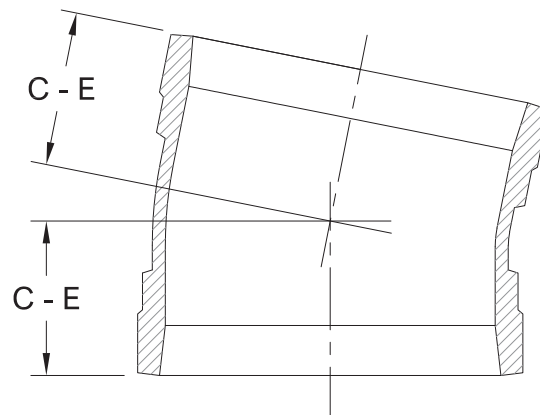


Table A

Nominal Size in (mm)	Pipe O.D. in (mm)	Dimension in (mm)	Weight lb (kg)
		C - E	
1-1/4 (32)	1.660 (42.2)	1-3/8 (35)	0.57 (0.26)
1-1/2 (40)	1.900 (48.3)	1-3/8 (35)	0.62 (0.28)
2 (50)	2.375 (60.3)	1-1/2 (38)	0.88 (0.40)
2-1/2 (65)	2.875 (73.0)	1-1/2 (38)	1.59 (0.72)
76 mm	3.000 (76.1)	1-1/2 (38)	1.59 (0.72)
3 (80)	3.500 (88.9)	1-1/2 (38)	1.65 (0.75)
4 (100)	4.500 (114.3)	1-3/4 (45)	2.76 (1.25)
139 mm	5.500 (139.7)	2 (51)	4 (1.82)
165 mm	6.500 (165.1)	2 (51)	5.39 (2.45)
6 (150)	6.625 (168.3)	2 (51)	5.91 (2.68)
8 (200)	8.625 (219.1)	2 (51)	7.50 (3.40)

P/N 9999970678